

Canterbury Station

Your transport options

Plan your trip at transportnsw.info
Allow extra travel time

Southwest transport changes



19 August 2024

M1 Metro opened between Chatswood and Sydenham

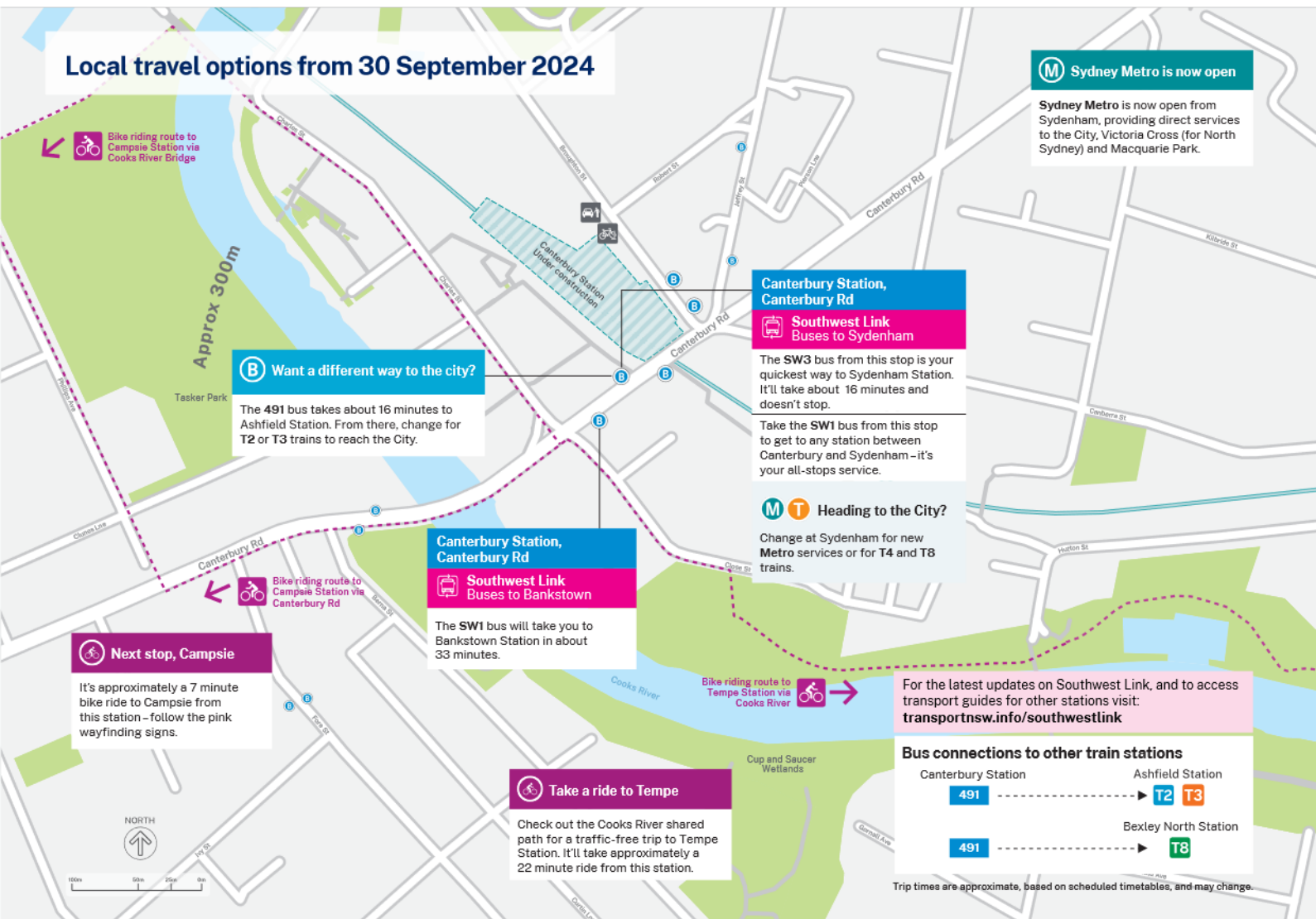


30 September 2024

T3 Bankstown Line closes between Sydenham and Bankstown for metro conversion work






- Southwest Link launches, providing a high frequency bus service between Sydenham and Bankstown stations for up to 12 months.
- Buses temporarily replace trains between Lidcombe and Bankstown for approximately 3 weeks.
- T3 Liverpool & Inner West Line train service introduced from Liverpool to the City via Lidcombe.
- St Peters and Erskineville stations are serviced by the T8 South Line.

Local travel options from 30 September 2024



Southwest Link bus services and frequencies



-  **Every 2 to 4 minutes** during peak periods
-  **At least every 10 minutes** across most of the day
-  **At least every 15 minutes** late at night
-  Accessible low floor buses will be used across Southwest Link bus routes.
-  Travel on Southwest Link buses is fare free.

Discover more ways to walk or ride

We're introducing lots of ways to make your walking or riding experience easier during these transport changes.



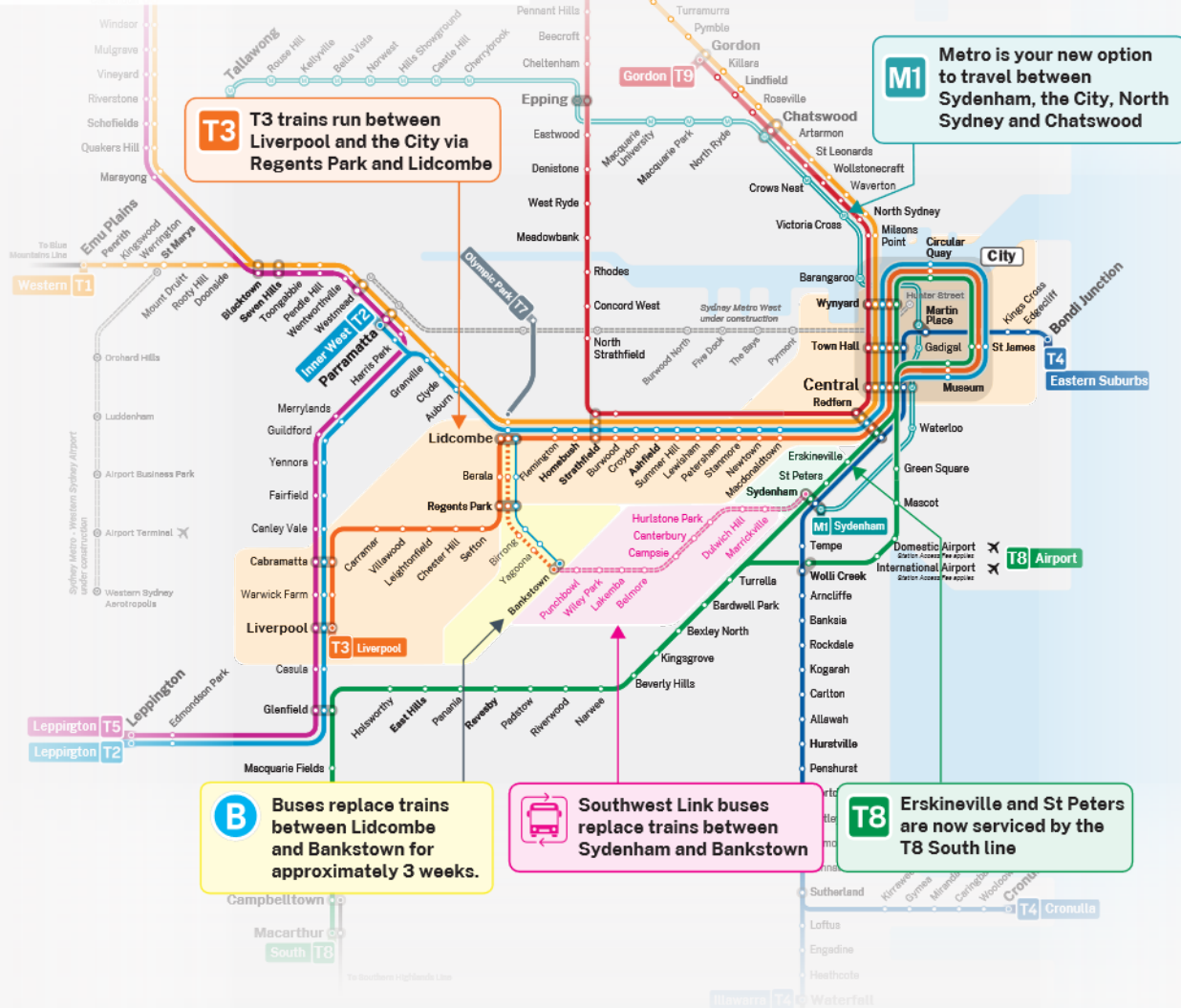
Visit transportnsw.info/southwest-link/active-transport to get bike route maps, tips for your trips, and sign up for free courses and local events.



Canterbury Station

Your transport options

Network changes from 30 September 2024



T6 Coming soon: T6 Lidcombe & Bankstown Line

From 30 September 2024, buses temporarily replace trains between Lidcombe and Bankstown stations for approximately 3 weeks.

Yagoona and Birrong stations will be closed and serviced by train replacement buses during this time.

Transport will share further details about the T6 Lidcombe & Bankstown Line when available.

Train replacement bus services between Lidcombe and Bankstown from 30 September 2024



Lidcombe – Change for trains to City, Parramatta or Redfern **T1 T2 T3**

Regents Park – Change for trains to Liverpool **T3**

Travel on these train replacement buses is fare free



Translating and interpreting service

If you need help understanding this information, please contact the Translating and Interpreting Service (TIS) on 131 450 and ask them to call Transport for NSW on 131 500.

© Transport for NSW

The information in this brochure is intended as a guide only and is subject to change at any time without notice.

Plan your trip at transportnsw.info/trip Allow extra travel time

Use Trip Planner to search trip options, check timetables and travel alerts, and see your trip mapped out.



Southwest Link
Making way for Sydney Metro